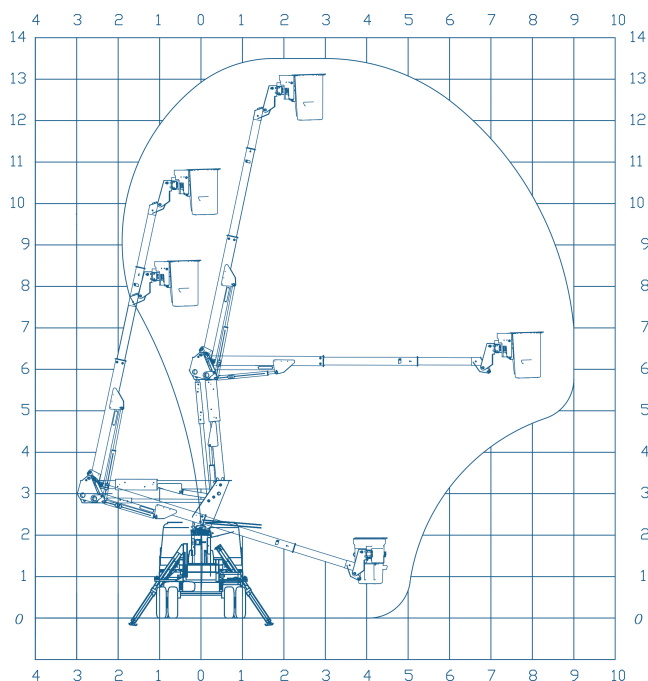




WORK CHART



- BASKET ROTATION
90° + 90° (OPTIONAL)
- STABILIZERS
2 x A
- MAX HEIGHT
13,5 m
- BASKET HEIGHT
12,0 m
- SIDE REACH
8,50 m
- WEIGHT CAPACITY
2 x 136 kg
- BASKET SIZE
0,7 x 0,7 x 1,1 m
- CONTROLS
HYDRAULIC
- TOWER ROTATION
360°
- P.B.T.
5.000 kg

STANDARD EQUIPMENT

Product Description

We present the **SOCAGE forSte 13,5ATi** articulated aerial platform, to install on vehicles, it is made of high quality steel, it is made up of:

Group of simple pantograph bars: The group allows the reduction of the installation width and a distribution of stabilizing loads that allows to overcome intermediate obstacles between the equipment and the work area. The two articulated bars are the connecting elements between the rotating tower and the main telescopic arm.

Main Arm: Main arm in telescopic execution, with a working area from -11° to + 85° based on the horizontal. All the hydraulic tubes are located inside the boom, so there are no external elements that can be damaged by impacts or collisions with obstacles during the different phases of work.

Leveling system: system by master slave cylinder with double compensation

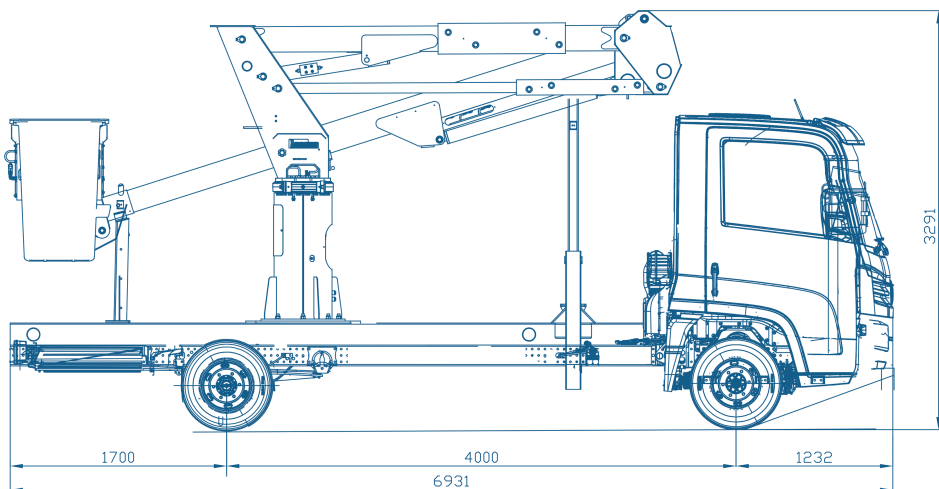
Access to the basket: Designed to facilitate access and eventual rescues, by means of a hydraulic cylinder.

Technical Characteristics:

- Fiberglass basket
- Bi-seat basket (Optional)
- Front stabilizers 2 X A
- 360° tower rotation
- Tower with 5-way distributor
- **Insulation class "C" 46kV**

Security Devices

- Emergency stop buttons
- Emergency lowering hand pump
- Flanged shut-off valves on all cylinders
- Maximum pressure valves on hydraulic system
- Thermal protections on the electrical system
- Hooks for safety belts in the basket
- Remote controls in the on/off and accelerate/decelerate vehicle basket



Socage do Brasil follows regulatory standards NR12 XII, ANSI A92.2-2015, ABNT NBR: 16092:2018

