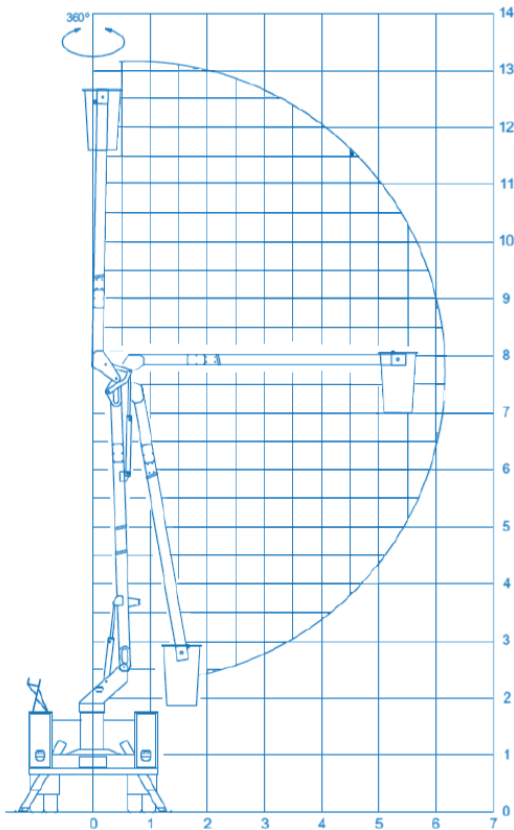




THE UNIQUE AND INNOVATIVE PLATFORM

WORK CHART



- BASKET ROTATION
0°
- STABILIZERS
2 x A
- MAX HEIGHT
13 m
- BASKET HEIGHT
11,5 m
- SIDE REACH
6,2 m
- WEIGHT CAPACITY
136 kg
- BASKET SIZE
0,7 x 0,7 x 1,1 m
- CONTROL
HYDRAULIC
- TOWER ROTATION
360°
- P.B.T.
5.000 kg

EQUIPMENT OF SERIES

Product Description

Introducing the **SOCAGE forSte 13CADi** aerial platform, fixed to the chassis of trucks weighing 5 tons or more. High quality steel frame. Above the chassis is the base that supports the structure.

Operational boom: Boom in tubular execution, with a horizontal base work area. All hydraulic tubes are located inside the boom, so there are no external elements that can be damaged by impacts or collisions with obstacles during the various work phases.

Basket leveling: System with insulated or non-insulated pole for leveling the basket.

Leveling: Basket leveling system using chains, considerably reducing the volume and cost of maintenance.

Tip: Positioning the manufactured basket for ease of access and eventual rescues and cleaning. Slewing system: By continuous 360° rolling, with drive controls on the turret and basket with the best ergonomic position.

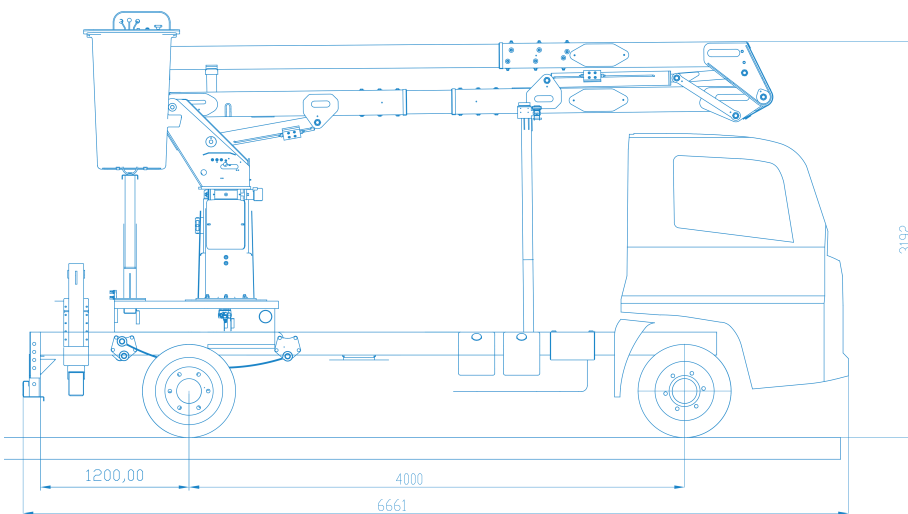
Stabilizers: Front (optional) and rear 'A' type with 3.2m opening, ensuring better operating stability;

Technical Characteristics:

- Fiberglass basket
- Previous Stabilizers 2 X A
- 360° turret rotation
- **Insulation class "C" 46kV**
- Insulating liner with technical certificate

Security Devices

- Emergency stop buttons
- Emergency lowering hand pump
- Flanged check valves on all cylinders
- Maximum pressure valves on hydraulic system
- Thermal protections on the electrical system
- Hooks for safety belts in the basket
- Remote controls in the on/off and accelerate/decelerate vehicle basket



Socage do Brasil follows regulatory standards NRI2 XII, ANSI A92.2-2015, ABNT NBR: 16092:2018

