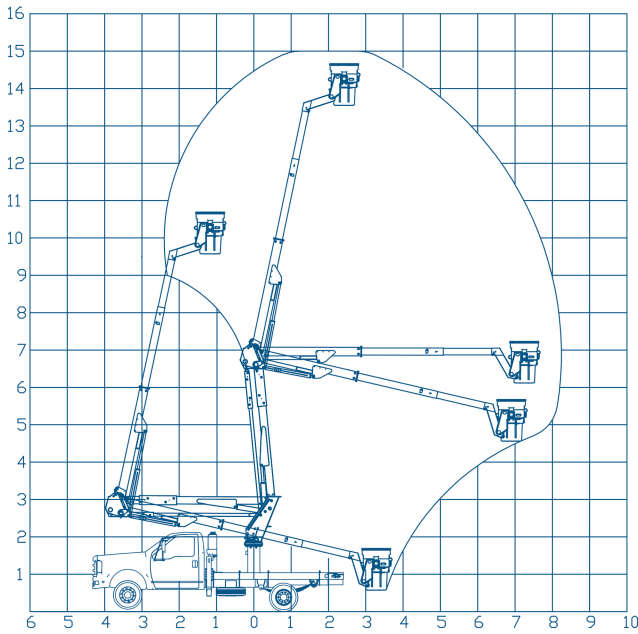




THE UNIQUE AND INNOVATIVE PLATFORM

WORK CHART



- BASKET ROTATION
90° + 90° (OPTIONAL)
- STABILIZERS
4 x A
- MAX HEIGHT
15,0 m
- BASKET HEIGHT
13,5 m
- SIDE REACH
7 m
- WEIGHT CAPACITY
2 x 136 kg
- BASKET SIZE
0,7 x 0,7 x 1,1 m
- CONTROL
HYDRAULIC
- TOWER ROTATION
360°
- P.B.T.
6.000 kg

EQUIPMENT OF SERIES

Product Description

SOCAGE forSte 15 ATi telescopic articulated aerial platform, with the following technical characteristics:

Support tower for arms: Made of high quality sheet steel, it is made up of a curved main body and electrowelded reinforcements. The rotation is given by a base set of European technology with a hydraulic motor and infinite rotation.

Single pantograph bar group: The pantograph system allows a reduction in the width of the installation, a better distribution of the load that allows overcome obstacles between the equipment and the work area. The two articulated bars are the connecting elements between the rotating tower and the link that supports the main arm.

Telescopic boom: in tubular design, with a working area from -7° to +75° with a horizontal base.

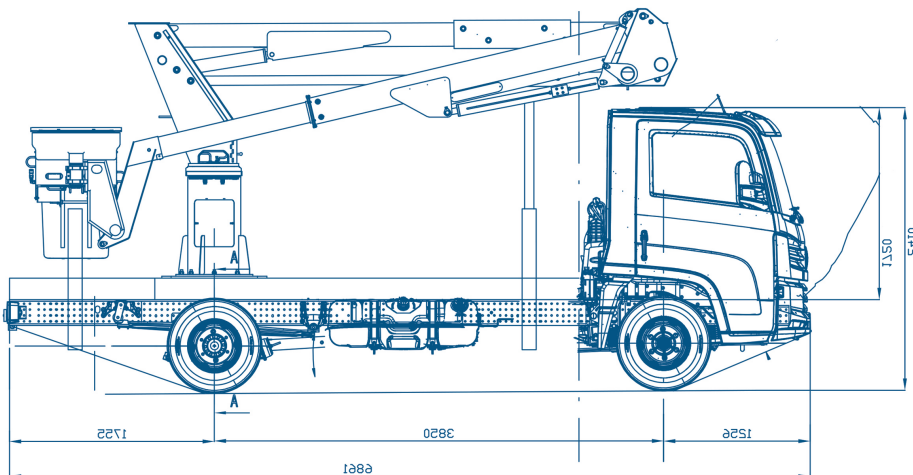
Hydraulic leveling: Basket leveling system using two hydraulic cylinders, master slave system with correction control in basket and tower.

Technical Characteristics

- Fiberglass basket
- Hydraulic controls
- High quality steel frame
- 360° tower rotation
- **Insulation class "C" 46kV - "B" 69kV**

Security Devices

- Emergency stop buttons
- Emergency lowering hand pump
- Commands
- Flanged check valves on all cylinders
- Maximum pressure valves on hydraulic system
- Thermal protections on the electrical system
- Hooks for safety belts in the basket



Socage do Brasil follows regulatory standards NR12 XII, ANSI A92.2-2015, ABNT NBR: 16092 12/2018

