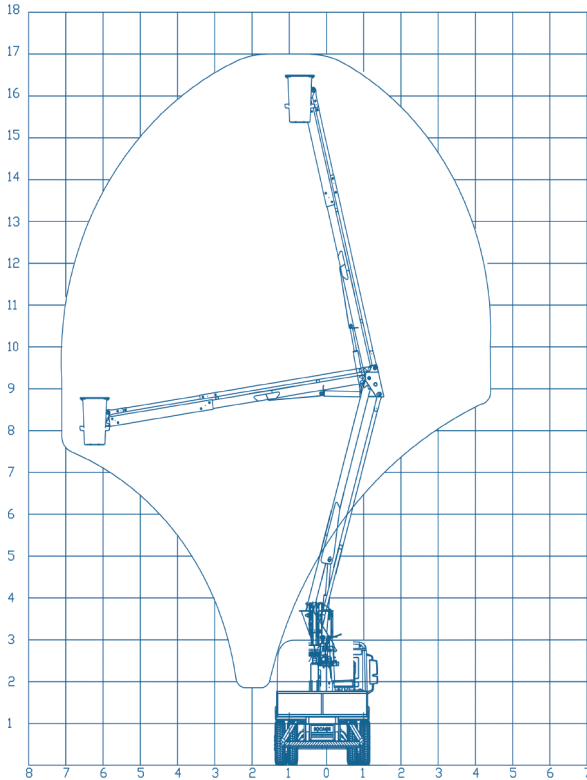
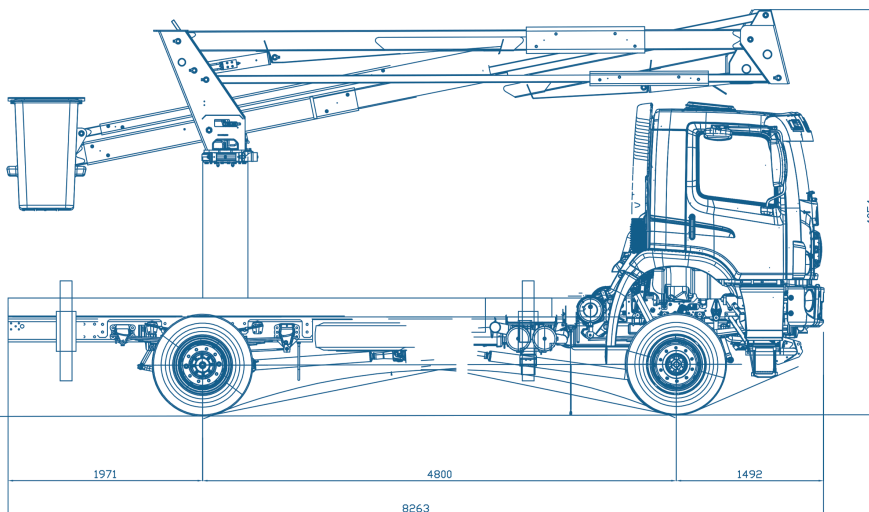




WORK CHART



- BASKET ROTATION
90° + 90° (OPTIONAL)
- STABILIZERS
4 X A
- MAX HEIGHT
17,0 m
- BASKET HEIGHT
15,5 m
- SIDE REACH
7,3 m
- WEIGHT CAPACITY
2 x 136 kg
- BASKET SIZE
0,7 x 0,7 x 1,1 m
- CONTROL
HYDRAULIC
- TOWER ROTATION
360°
- P.B.T.
13.000 kg



THE UNIQUE AND INNOVATIVE PLATFORM

EQUIPMENT OF SERIES

Product Description

We present the **SOCAGE forSte 17Ai** articulated aerial platform, made of high quality steel, it is made up of:

Group of simple pantograph bars: The group allows the reduction of the installation width and a distribution of stabilizing loads that allows to overcome intermediate obstacles between the equipment and the work area. The two articulated bars are the connecting elements between the rotating tower and the main telescopic arm.

Main Arm: Main arm in tubular execution, with a working area from -7° to +75° based on the horizontal. All the hydraulic tubes are located inside the boom, so there are no external elements that can be damaged by impacts or collisions with obstacles during the different phases of work.

Leveling system: system by means of mechanical leveling bar, activated together with the articulated platform arm

Leveling bar: Basket leveling system without the use of chains, which considerably reduces volume and maintenance cost.

Access to the basket: Designed to facilitate access and eventual rescues, by means of a tilting mechanical bolt.

Technical Characteristics

- Fiberglass basket
- Hydraulic controls
- Stabilizing feet
- **Insulation class "C" 46kV - "B" 69kV**

Security Devices

- 2 emergency stop valves
- Emergency lowering hand pump
- Check valves on all cylinders
- Maximum pressure valves in the hydraulic system
- Seat belt hooks in the basket
- Activation or stop of the vehicle's engine by remote system



Socage do Brasil follows regulatory standards NR12 XII, ANSI A92.2-2015, ABNT NBR: 16092 12/2018

