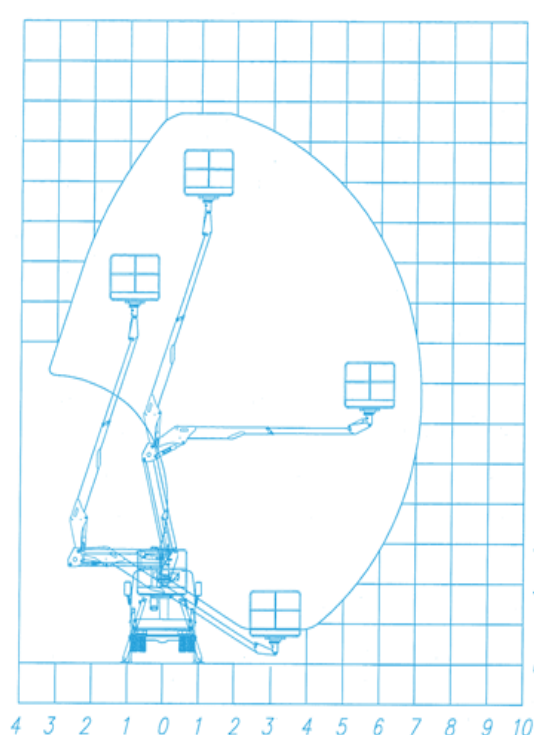






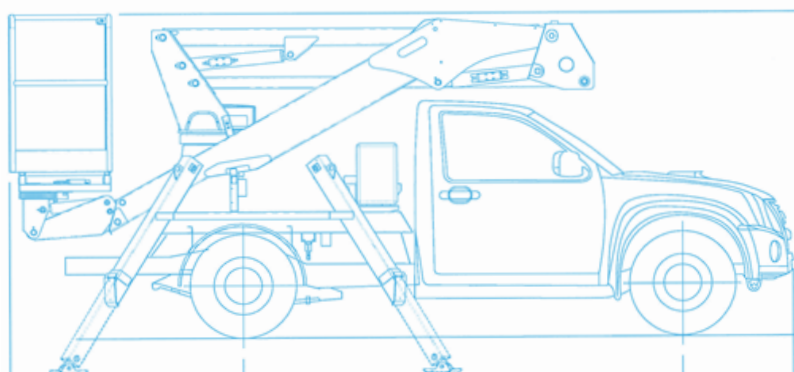




WORK CHART



-  STABILIZERS
A + A
-  MAX HEIGHT
13,70 m
-  BASKET HEIGHT
11,70 m
-  SIDE REACH
7,20 m
-  WEIGHT CAPACITY
250 kg
-  BASKET SIZE
1,4 x 0,7 x 1,1 m
-  CONTROL
HYDRAULIC
-  ROTATION
360°
-  P.B.T.
2,900/3,500 kg



forSte A314

THE UNIQUE AND INNOVATIVE PLATFORM

EQUIPMENT OF SERIES

Product Description

We present the articulated aerial platform **SOCAGE A314 forSte** telescopic boom, fixed to the chassis of vehicles with 4x4 traction, as long as they are with a simple cabin. High quality steel frame.

Subframe: Above the subframe is placed the support for supporting the aerial part – thin tube. As a finish, a non-slip aluminum floor surface is installed, in the lowered version, to facilitate loading and unloading maneuvers of work tools.

Boom Tower: Consists of a sloping main body and welded reinforcements. Installed on the frame's swivel bracket. The rotation is ensured by the base of the structure by a hydraulic motor and worm screw. The endless hydraulic manifold present in the tower allows the continuous rotation of the structure in relation to the subframe.

Pantographic Group: The group guarantees a compact aerial platform, a favorable distribution of loads and makes it possible to overcome obstacles between the equipment and the work area. The articulated bars (upper and lower) are the connecting elements between the rotating tower and the main telescopic arm.

Technical Characteristics

- Aluminum basket
- Proportional Hydraulic Controls
- High quality steel frame
- 360° tower rotation
- Hydraulic leveling system

Security Devices

- Emergency stop buttons
- Emergency lowering hand pump
- Manual controls for emergency descent
- Shielded shut-off valve on all cylinders
- Maximum pressure valves on hydraulic system
- Hooks for safety belts in the basket
- Basket control equipped with horn and vehicle engine starting stop

Equipment Options

- 1 Kv Insulation / Polyethylene Basket



Socage do Brasil follows regulatory standards NR12 XII, ANSI A92.2-2015, ABNT NBR: 16092:2018

