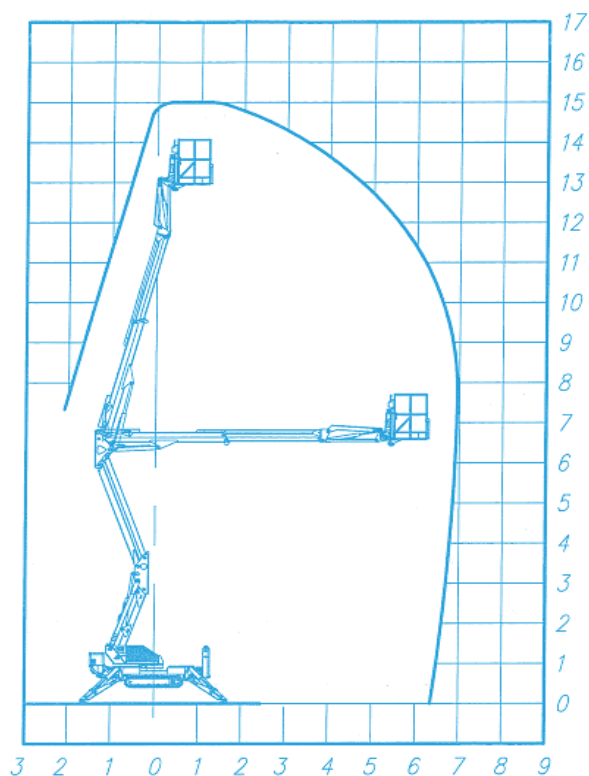
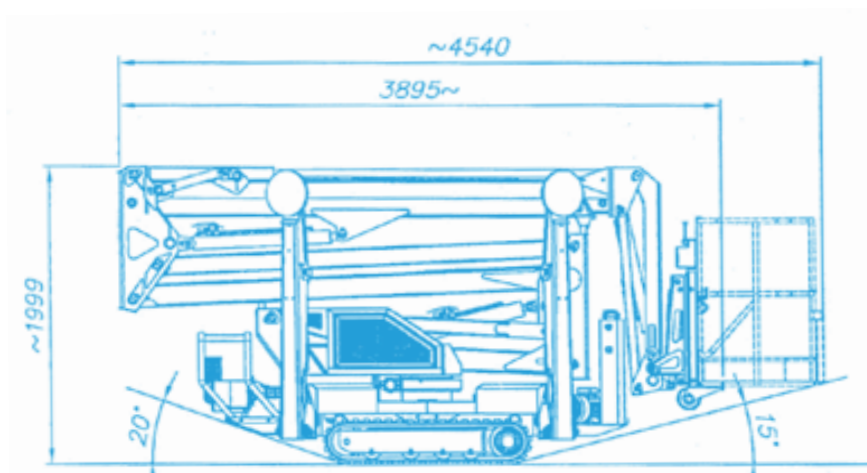




WORK CHART



- STABILIZERS
Z + Z
- MAX HEIGHT
15,0 m
- BASKET HEIGHT
13,0 m
- SIDE REACH
7,0 m
- WEIGHT CAPACITY
225 kg
- BASKET SIZE
1,4 x 0,7 x 1,1 m
- CONTROL
HYDRAULIC
- ROTATION
400°
- P.B.T.
1.900 kg



for Site SPJ315

THE UNIQUE AND INNOVATIVE PLATFORM

EQUIPMENT OF SERIES

Product Description

We present the proposal for the **SOCAGE SPJ315** Aerial Platform

There are two versions of the equipment:

**Gasoline / Electric;
Diesel / Electric.**

Its consumption is on average 1L/h.

To use in electric mode, just have an extension available at a power point and its consumption is on average 2.5KW/h.

Motors installed are Honda models with electric / retractable starter and vary according to the equipment version.

Technical Characteristics

- Aluminum basket
- Extendable mat
- Main engine start and stop control from the basket.
- Visual chassis stabilization control device.
- Electric hour meter
- Hydraulic system with differential filtration in both flow directions.
- Bearings that do not require lubrication.
- Electrical Outlet on 230V Basket.
- Average speed 4Km/h to 5Km/h
- Battery to power the electrical system of the equipment.
- Battery charger

Security Devices

- Manual emergency pump
- Protected shut-off valve



Socage do Brasil follows regulatory standards NR12 XII, ANSI A92.2-2015, ABNT NBR: 16092:2018

